

CANCER of the *BUCCAL CAVITY and PHARYNX*

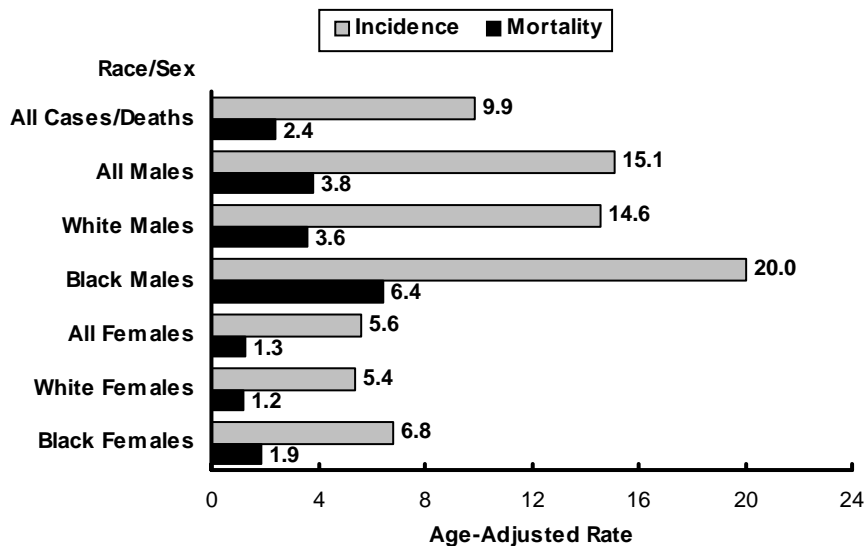
Data Highlights

There were 1,400 cases of invasive cancer of the buccal cavity (oral or mouth) and pharynx diagnosed in 2004 among Pennsylvania residents. The average annual age-adjusted incidence rate for 2000-2004 was almost three times higher among males compared to females (15.1 versus 5.6 per 100,000, respectively). Black males were disproportionately burdened. The 2000-2004 average annual age-adjusted incidence rate among black males was 20.0, compared to 14.6 for white males. Excessive use of alcohol, in combination with tobacco products, is the major cause of this disease. Many new cases and deaths could be directly prevented with a reduction in these risk factors.

The annual age-adjusted incidence rates for black males have been lower in recent years. For white males and females and black females, there were no discernible trends in the annual age-adjusted incidence rates between 1995 and 2004. The incidence rates rose steadily with age, with nearly 83 percent of the invasive cases diagnosed among those aged 50 years and older during the 2000-2004 period. Average annual age-specific incidence rates for 2000-2004 were highest for black males ages 55-74. Compared to whites, black residents, especially males, had much higher percentages of cases diagnosed at the distant stage. Among black males and females, 34.2 and 25.7 percent, respectively, of the 2004 cases were diagnosed at the distant stage, compared to 16.3 percent among white males and 16.0 percent among white females.

In 2004, there were 330 deaths among residents due to cancers of the buccal cavity and pharynx. As observed with the incidence rates, average annual age-adjusted death rates for 2000-2004 were highest for males, especially for black males. The 2004 age-adjusted death rate for black males was 5.1 compared to 3.4 among white males. White females and black females had the lowest mortality rates, 1.2 and 1.6 per 100,000, respectively. However, the annual rates for white females, as well as white males, have showed no discernible trends. The annual age-adjusted death rates among black males have been on the decline. The annual numbers of events for black females are small, making the rates difficult to interpret.

FIGURE 2
Average Annual Age-Adjusted Incidence and Mortality Rates*
by Sex and Race, Pennsylvania Residents, 2000-2004



*per 100,000 2000 U.S. standard million population.

Risk Factors

Cigarette, cigar and pipe smoking.

Smokeless tobacco.

Excessive use of alcohol.

Early Detection

Insufficient evidence whether palpation and inspection of the oral cavity in asymptomatic persons reduces mortality. The American Cancer Society recommends a complete oral exam be included in a periodic health examination.

Cancer of the Buccal Cavity and Pharynx: INCIDENCE (Invasive)

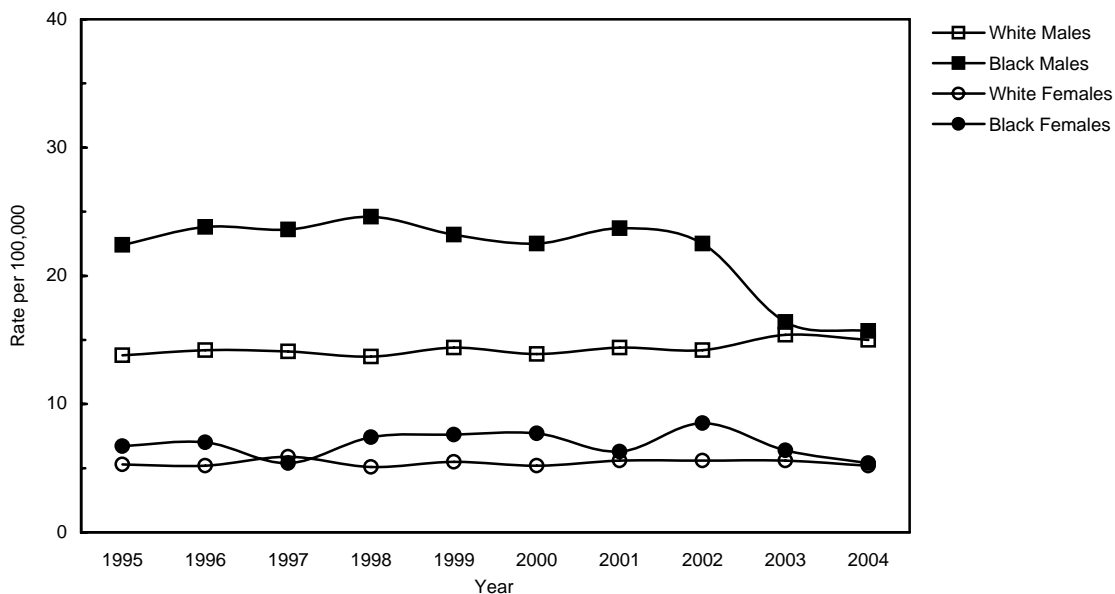
TABLE 2-A
Number of Cancer Cases, Age-Adjusted Incidence Rates and 95% Confidence Intervals
by Sex, Race and Year, Pennsylvania Residents, 1995-2004

Year	All Cases*		Males						Females					
	No.	Rate (CI)	All Races* No.	All Races* Rate (CI)	White No.	White Rate (CI)	Black No.	Black Rate (CI)	All Races* No.	All Races* Rate (CI)	White No.	White Rate (CI)	Black No.	Black Rate (CI)
2004	1,400	9.8 (9.3-10.3)	973	15.1 (14.2-16.0)	876	15.0 (14.0-16.0)	76	15.7 (12.2-19.2)	427	5.3 (4.8-5.8)	376	5.2 (4.7-5.7)	35	5.4 (3.6-7.2)
2003	1,451	10.2 (9.7-10.7)	994	15.6 (14.6-16.6)	891	15.4 (14.4-16.4)	79	16.4 (12.8-20.0)	457	5.8 (5.3-6.3)	403	5.6 (5.1-6.1)	41	6.4 (4.4-8.4)
2002	1,399	10.0 (9.5-10.5)	946	15.1 (14.1-16.1)	811	14.2 (13.2-15.2)	107	22.5 (18.2-26.8)	453	5.8 (5.3-6.3)	393	5.6 (5.0-6.2)	53	8.5 (6.2-10.8)
2001	1,373	9.8 (9.3-10.3)	926	14.9 (13.9-15.9)	812	14.4 (13.4-15.4)	98	23.7 (19.0-28.4)	447	5.7 (5.2-6.2)	401	5.6 (5.1-6.1)	38	6.3 (4.3-8.3)
2000	1,334	9.7 (9.2-10.2)	913	14.9 (13.9-15.9)	772	13.9 (12.9-14.9)	100	22.5 (18.1-26.9)	421	5.5 (5.0-6.0)	359	5.2 (4.7-5.7)	46	7.7 (5.5-9.9)
1999	1,384	10.2 (9.7-10.7)	920	15.5 (14.5-16.5)	789	14.4 (13.4-15.4)	95	23.2 (18.5-27.9)	464	5.8 (5.3-6.3)	403	5.5 (5.0-6.0)	43	7.6 (5.3-9.9)
1998	1,301	9.7 (9.2-10.2)	882	14.9 (13.9-15.9)	747	13.7 (12.7-14.7)	102	24.6 (19.8-29.4)	419	5.4 (4.9-5.9)	368	5.1 (4.6-5.6)	41	7.4 (5.1-9.7)
1997	1,341	10.1 (9.6-10.6)	893	15.2 (14.2-16.2)	770	14.1 (13.1-15.1)	98	23.6 (18.9-28.3)	448	5.9 (5.4-6.4)	409	5.9 (5.3-6.5)	30	5.4 (3.5-7.3)
1996	1,299	9.8 (9.3-10.3)	880	15.0 (14.0-16.0)	767	14.2 (13.2-15.2)	99	23.8 (19.1-28.5)	419	5.5 (5.0-6.0)	370	5.2 (4.7-5.7)	40	7.0 (4.8-9.2)
1995	1,263	9.5 (9.0-10.0)	846	14.6 (13.6-15.6)	742	13.8 (12.8-14.8)	92	22.4 (17.8-27.0)	417	5.4 (4.9-5.9)	372	5.3 (4.8-5.8)	39	6.7 (4.6-8.8)

* Includes any unknowns.

NOTES: Age-adjusted rates are per 100,000 and are computed by the direct method using the 2000 U.S. standard million population. Rates based on less than 20 events are considered statistically unreliable. CI = 95% confidence interval based on a formula for estimating the standard error or SE (see Technical Notes) Starting in 2001, cancer cases were coded using ICD-O-3. Cancer primary site/type groupings follow the definitions used by the National Cancer Institute's SEER program

FIGURE 2-A
Age-Adjusted Incidence Rates by Sex and Race
Pennsylvania Residents, 1995-2004



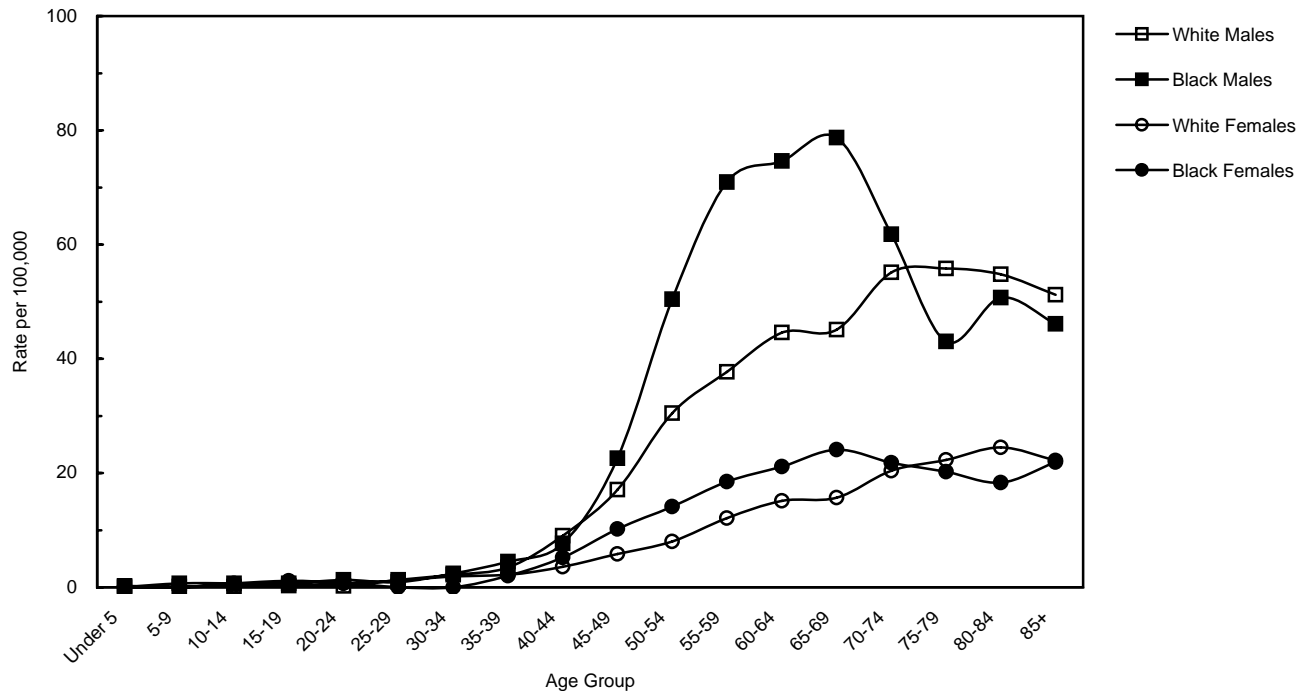
Cancer of the Buccal Cavity and Pharynx: INCIDENCE (Invasive)

TABLE 2-B
Average Annual Age-Specific Incidence Rates by Sex and Race
Pennsylvania Residents, 2000-2004

Age Group	All Cases	Males			Females		
		All Races	White	Black	All Races	White	Black
Total	11.3	15.9	16.2	15.4	6.9	7.1	6.4
Under 5	0.1	0.2	0.2	-	-	-	-
5-9	0.1	0.2	0.1	0.7	-	-	-
10-14	0.2	0.1	0.1	0.7	0.3	0.2	0.7
15-19	0.5	0.5	0.3	0.7	0.5	0.4	1.1
20-24	0.7	0.6	0.2	1.3	0.8	0.7	0.8
25-29	1.2	1.3	1.3	0.9	1.1	1.2	-
30-34	1.9	2.1	2.2	2.4	1.7	1.9	-
35-39	3.0	3.8	3.5	4.5	2.2	2.2	2.0
40-44	6.5	9.1	9.0	7.7	3.8	3.6	5.2
45-49	11.9	17.8	17.1	22.6	6.3	5.8	10.2
50-54	20.2	32.2	30.5	50.4	8.6	8.0	14.1
55-59	26.0	40.3	37.7	70.9	12.6	12.1	18.5
60-64	30.2	46.6	44.6	74.6	15.5	15.1	21.1
65-69	30.8	47.5	45.1	78.7	16.8	15.7	24.1
70-74	36.0	56.0	55.1	61.8	20.7	20.4	21.8
75-79	35.4	55.2	55.8	43.0	22.1	22.3	20.2
80-84	35.5	54.8	54.8	50.7	24.4	24.5	18.3
85+	30.6	51.2	51.2	46.1	22.5	22.2	21.9

NOTES: Rates are per 100,000 population (2000-2004) for each specified group and are based on only invasive cancer cases. Starting in 2001, cancer cases were coded using ICD-O-3. Cancer primary site/type groupings follow the definitions used by the National Cancer Institute's SEER program

FIGURE 2-B
Average Annual Age-Specific Incidence Rates by Sex and Race
Pennsylvania Residents, 2000-2004



Cancer of the Buccal Cavity and Pharynx: INCIDENCE (Invasive)

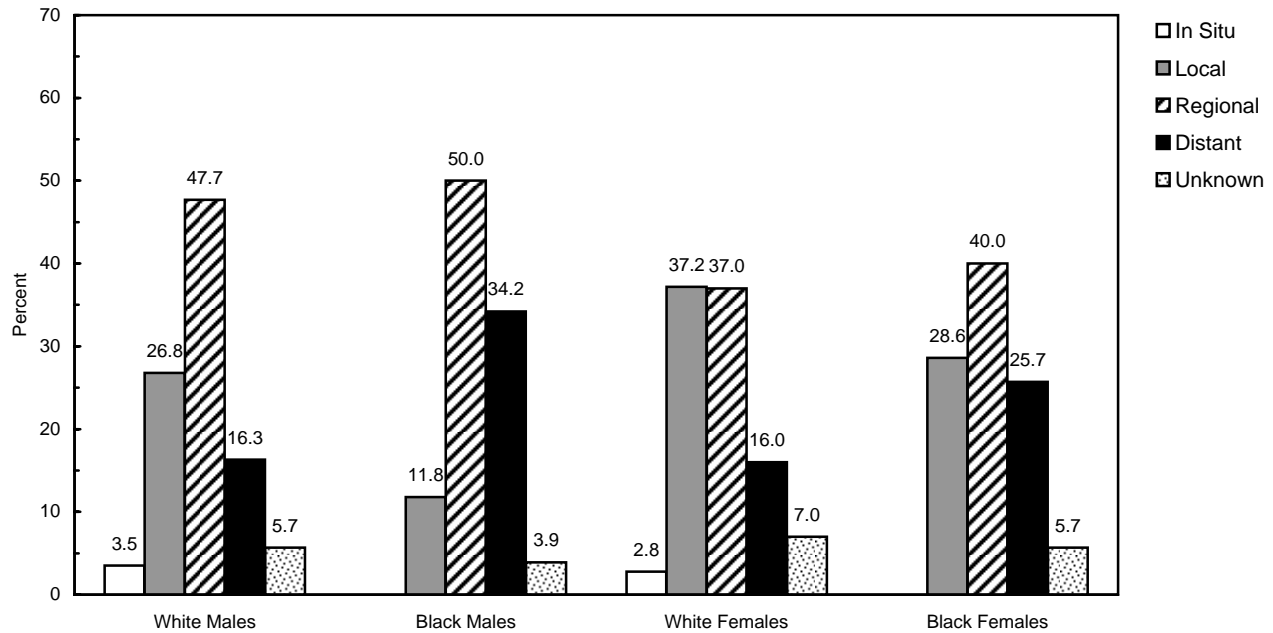
TABLE 2-C
Total Number of Cancer Cases by Age, Sex and Race
Pennsylvania Residents, 2000-2004

Age Group	All Cases*	Males			Females		
		All Races*	White	Black	All Races*	White	Black
Total	6,957	4,752	4,162	460	2,205	1,932	213
Under 5	3	3	3	0	0	0	0
5-9	4	4	2	2	0	0	0
10-14	10	3	1	2	7	4	2
15-19	22	11	6	2	11	8	3
20-24	27	11	4	3	16	12	2
25-29	43	23	19	2	20	17	0
30-34	75	42	36	5	33	31	0
35-39	134	84	67	10	50	42	5
40-44	313	219	189	17	94	77	13
45-49	555	407	348	44	148	119	23
50-54	839	657	557	80	182	149	27
55-59	883	661	558	85	222	189	28
60-64	831	606	526	69	225	196	26
65-69	752	528	458	59	224	189	26
70-74	842	567	517	38	275	248	21
75-79	730	457	431	20	273	255	16
80-84	520	293	275	14	227	213	10
85+	373	176	165	8	197	182	11

* Includes any unknowns.

NOTES: Starting in 2001, cancer cases were coded using ICD-O-3. Cancer primary site/type groupings follow the definitions used by the National Cancer Institute' SEER program.

FIGURE 2-C
Stage of Disease at Diagnosis, Percent by Sex and Race
Pennsylvania Residents, 2004



NOTE: Includes in situ and invasive cases.

Number and Percent of Invasive Cases Microscopically Confirmed: 1,375 - 98.2%

Cancer of the Buccal Cavity and Pharynx: MORTALITY

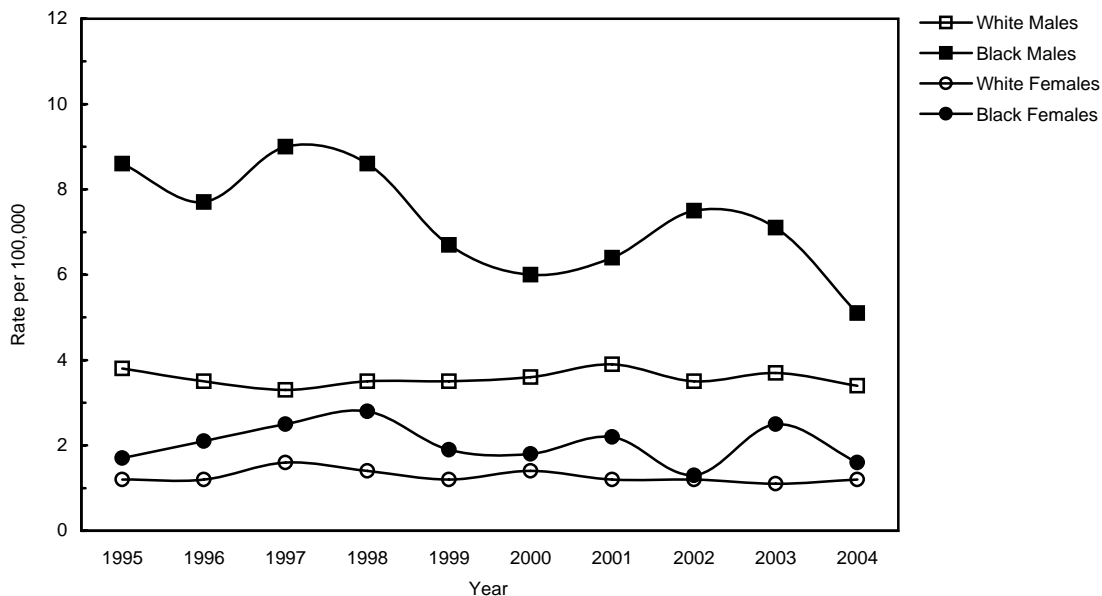
TABLE 2-D
Number of Cancer Deaths, Age-Adjusted Death Rates and 95% Confidence Intervals
by Sex, Race and Year, Pennsylvania Residents, 1995-2004

Year	All Deaths*		Males						Females					
			All Races*		White		Black		All Races*		White		Black	
	No.	Rate (CI)	No.	Rate (CI)	No.	Rate (CI)	No.	Rate (CI)	No.	Rate (CI)	No.	Rate (CI)	No.	Rate (CI)
2004	330	2.2 (2.0-2.4)	224	3.6 (3.1-4.1)	199	3.4 (2.9-3.9)	21	5.1 (2.9-7.3)	106	1.2 (1.0-1.4)	96	1.2 (1.0-1.4)	10	1.6 (0.6-2.6)
2003	356	2.4 (2.2-2.6)	250	3.9 (3.4-4.4)	217	3.7 (3.2-4.2)	30	7.1 (4.6-9.6)	106	1.2 (1.0-1.4)	89	1.1 (0.9-1.3)	16	2.5 (1.3-3.7)
2002	334	2.3 (2.1-2.5)	227	3.7 (3.2-4.2)	193	3.5 (3.0-4.0)	34	7.5 (5.0-10.0)	107	1.3 (1.1-1.5)	96	1.2 (1.0-1.4)	8	1.3 (0.4-2.2)
2001	363	2.5 (2.2-2.8)	248	4.1 (3.6-4.6)	217	3.9 (3.4-4.4)	27	6.4 (4.0-8.8)	115	1.3 (1.1-1.5)	100	1.2 (1.0-1.4)	13	2.2 (1.0-3.4)
2000	339	2.4 (2.1-2.7)	224	3.7 (3.2-4.2)	199	3.6 (3.1-4.1)	25	6.0 (3.6-8.4)	115	1.4 (1.1-1.7)	103	1.4 (1.1-1.7)	11	1.8 (0.7-2.9)
1999	332	2.3 (2.1-2.5)	221	3.7 (3.2-4.2)	193	3.5 (3.0-4.0)	27	6.7 (4.2-9.2)	111	1.3 (1.1-1.5)	100	1.2 (1.0-1.4)	11	1.9 (0.8-3.0)
1998	350	2.5 (2.2-2.8)	224	3.8 (3.3-4.3)	189	3.5 (3.0-4.0)	35	8.6 (5.8-11.4)	126	1.5 (1.2-1.8)	110	1.4 (1.1-1.7)	16	2.8 (1.4-4.2)
1997	356	2.6 (2.3-2.9)	224	3.8 (3.3-4.3)	184	3.3 (2.8-3.8)	37	9.0 (6.1-11.9)	132	1.6 (1.3-1.9)	118	1.6 (1.3-1.9)	14	2.5 (1.2-3.8)
1996	324	2.3 (2.0-2.6)	219	3.8 (3.3-4.3)	187	3.5 (3.0-4.0)	31	7.7 (5.0-10.4)	105	1.3 (1.1-1.5)	93	1.2 (1.0-1.4)	12	2.1 (0.9-3.3)
1995	335	2.5 (2.2-2.8)	233	4.2 (3.7-4.7)	198	3.8 (3.3-4.3)	34	8.6 (5.7-11.5)	102	1.2 (1.0-1.4)	92	1.2 (1.0-1.4)	10	1.7 (0.6-2.8)

* Includes any unknowns.

NOTES: Age-adjusted rates are per 100,000 and are computed by the direct method using the 2000 U.S. standard million population. Rates based on less than 20 events are considered statistically unreliable. CI = 95% confidence interval based on a formula for estimating the standard error or SE (see Technical Notes) Cancer primary site/type groupings follow the definitions used by the National Cancer Institute's SEER program

FIGURE 2-D
Age-Adjusted Death Rates by Sex and Race
Pennsylvania Residents, 1995-2004



Cancer of the Buccal Cavity and Pharynx: MORTALITY

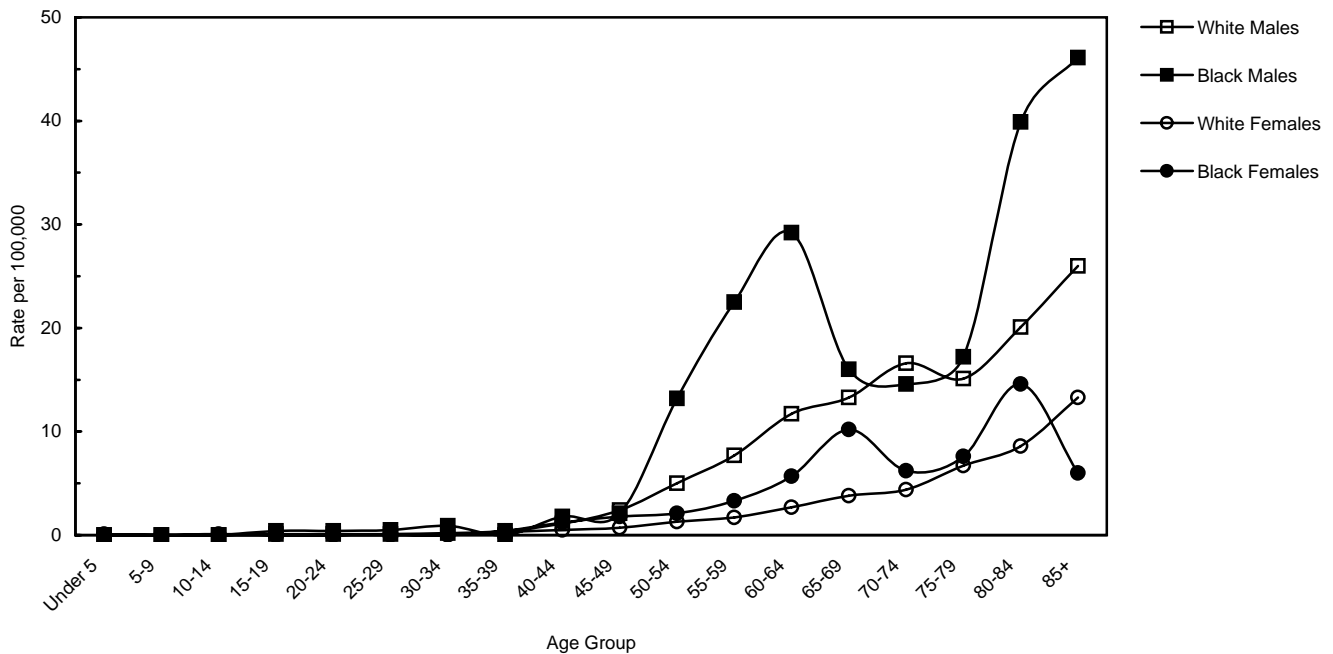
TABLE 2-E
Number of Deaths and Average Annual Age-Specific Death Rates by Sex and Race
Pennsylvania Residents, 2000-2004

Age Group	Males								Females					
	All Deaths*		All Races*		White		Black		All Races*		White		Black	
	No.	Rate	No.	Rate	No.	Rate	No.	Rate	No.	Rate	No.	Rate	No.	Rate
Total*	1,722	2.8	1,173	3.9	1,025	4.0	137	4.6	549	1.7	484	1.8	58	1.7
Under 5	1	0.0	0	-	0	-	0	-	1	0.1	1	0.1	0	-
5-9	0	-	0	-	0	-	0	-	0	-	0	-	0	-
10-14	1	0.0	0	-	0	-	0	-	1	0.0	1	0.1	0	-
15-19	3	0.1	3	0.1	2	0.1	1	0.4	0	-	0	-	0	-
20-24	4	0.1	4	0.2	2	0.1	1	0.4	0	-	0	-	0	-
25-29	4	0.1	2	0.1	1	0.1	1	0.5	2	0.1	2	0.1	0	-
30-34	7	0.2	6	0.3	4	0.2	2	0.9	1	0.1	1	0.1	0	-
35-39	15	0.3	9	0.4	8	0.4	0	-	6	0.3	5	0.3	1	0.4
40-44	44	0.9	30	1.3	23	1.1	4	1.8	14	0.6	11	0.5	3	1.2
45-49	73	1.6	54	2.4	49	2.4	4	2.1	19	0.8	15	0.7	4	1.8
50-54	143	3.4	114	5.6	91	5.0	21	13.2	29	1.4	25	1.3	4	2.1
55-59	173	5.1	141	8.6	114	7.7	27	22.5	32	1.8	27	1.7	5	3.3
60-64	210	7.6	166	12.8	138	11.7	27	29.2	44	3.0	35	2.7	7	5.7
65-69	205	8.4	148	13.3	135	13.3	12	16.0	57	4.3	46	3.8	11	10.2
70-74	228	9.7	165	16.3	156	16.6	9	14.6	63	4.7	54	4.4	6	6.2
75-79	209	10.1	126	15.2	117	15.1	8	17.2	83	6.7	77	6.7	6	7.6
80-84	196	13.4	112	20.9	101	20.1	11	39.9	84	9.0	75	8.6	8	14.6
85+	205	16.8	92	26.8	84	26.0	8	46.1	113	12.9	109	13.3	3	6.0

* Includes any unknowns.

NOTES: Rates are per 100,000 population (2000-2004) for each specified group. Cancer primary site/type groupings follow the definitions used by the National Cancer Institute's SEER program.

FIGURE 2-E
Average Annual Age-Specific Death Rates by Sex and Race
Pennsylvania Residents, 2000-2004



Cancer of the Buccal Cavity and Pharynx: INCIDENCE (Invasive)

TABLE 2-F
Number of Cases, Average Annual Age-Adjusted Incidence Rates and 95% Confidence Intervals
by County and Sex, Pennsylvania Residents, 2000-2004

County	Total Cases	Males			Females			County	Total Cases	Males			Females		
		No.	Rate	(CI)	No.	Rate	(CI)			No.	Rate	(CI)	No.	Rate	(CI)
All Counties	6,957	4,752	15.1	(14.7-15.5)	2,205	5.6	(5.4-5.8)								
Adams	42	28	11.8	(7.4-16.2)	14	5.4	(2.6-8.2)	Juniata	6	5	8.4	(1.0-15.8)	1	1.3	(0.0-3.8)
Allegheny	815	543	16.2	(14.8-17.6)	272	6.1	(5.4-6.8)	Lackawanna	132	96	16.9	(13.5-20.3)	36	4.7	(3.2-6.2)
Armstrong	40	32	15.5	(10.1-20.9)	8	3.1	(1.0-5.2)	Lancaster	180	126	10.9	(9.0-12.8)	54	3.9	(2.9-4.9)
Beaver	124	86	16.9	(13.3-20.5)	38	5.9	(4.0-7.8)	Lawrence	58	46	17.8	(12.7-22.9)	12	4.0	(1.7-6.3)
Bedford	24	13	9.5	(4.3-14.7)	11	6.6	(2.7-10.5)	Lebanon	55	35	10.6	(7.1-14.1)	20	5.0	(2.8-7.2)
Berks	174	120	12.5	(10.3-14.7)	54	4.7	(3.4-6.0)	Lehigh	151	99	12.4	(10.0-14.8)	52	5.2	(3.8-6.6)
Blair	90	66	19.6	(14.9-24.3)	24	5.4	(3.2-7.6)	Luzerne	213	151	17.0	(14.3-19.7)	62	5.1	(3.8-6.4)
Bradford	35	29	17.2	(10.9-23.5)	6	2.8	(0.6-5.0)	Lycoming	71	47	15.0	(10.7-19.3)	24	6.3	(3.8-8.8)
Bucks	323	214	14.0	(12.1-15.9)	109	6.2	(5.0-7.4)	McKean	26	21	16.9	(9.7-24.1)	5	3.6	(0.4-6.8)
Butler	91	65	14.7	(11.1-18.3)	26	4.9	(3.0-6.8)	Mercer	81	48	14.7	(10.5-18.9)	33	8.5	(5.6-11.4)
Cambria	95	72	16.7	(12.8-20.6)	23	4.1	(2.4-5.8)	Mifflin	30	20	15.6	(8.8-22.4)	10	6.1	(2.3-9.9)
Cameron	3	2	11.0	(0.0-26.2)	1	3.3	(0.0-9.8)	Monroe	85	65	17.4	(13.2-21.6)	20	5.0	(2.8-7.2)
Carbon	35	24	13.6	(8.2-19.0)	11	5.7	(2.3-9.1)	Montgomery	396	263	13.6	(12.0-15.2)	133	5.6	(4.6-6.6)
Centre	66	47	16.6	(11.9-21.3)	19	6.1	(3.4-8.8)	Montour	14	8	16.9	(5.2-28.6)	6	8.6	(1.7-15.5)
Chester	190	129	12.6	(10.4-14.8)	61	4.9	(3.7-6.1)	Northampton	157	105	15.0	(12.1-17.9)	52	6.1	(4.4-7.8)
Clarion	18	14	12.7	(6.0-19.4)	4	2.7	(0.1-5.3)	Northumberland	57	32	12.1	(7.9-16.3)	25	8.2	(5.0-11.4)
Clearfield	50	29	12.6	(8.0-17.2)	21	7.5	(4.3-10.7)	Perry	22	14	11.3	(5.4-17.2)	8	6.7	(2.1-11.3)
Clinton	27	16	16.7	(8.5-24.9)	11	9.6	(3.9-15.3)	Philadelphia	936	653	20.7	(19.1-22.3)	283	6.5	(5.7-7.3)
Columbia	44	29	17.4	(11.1-23.7)	15	8.0	(4.0-12.0)	Pike	24	14	8.9	(4.2-13.6)	10	7.6	(2.9-12.3)
Crawford	53	37	16.0	(10.8-21.2)	16	5.7	(2.9-8.5)	Potter	12	10	19.4	(7.4-31.4)	2	3.3	(0.0-7.9)
Cumberland	96	58	10.7	(7.9-13.5)	38	5.6	(3.8-7.4)	Schuylkill	117	76	17.8	(13.8-21.8)	41	7.8	(5.4-10.2)
Dauphin	141	92	14.8	(11.8-17.8)	49	6.3	(4.5-8.1)	Snyder	23	13	14.0	(6.4-21.6)	10	9.4	(3.6-15.2)
Delaware	324	219	16.4	(14.2-18.6)	105	5.9	(4.8-7.0)	Somerset	40	28	12.2	(7.7-16.7)	12	5.3	(2.3-8.3)
Elk	23	19	19.9	(11.0-28.8)	4	3.9	(0.1-7.7)	Sullivan	4	1	6.2	(0.0-18.4)	3	11.7	(0.0-24.9)
Erie	177	118	17.6	(14.4-20.8)	59	6.7	(5.0-8.4)	Susquehanna	27	19	15.3	(8.4-22.2)	8	6.1	(1.9-10.3)
Fayette	84	65	15.9	(12.0-19.8)	19	3.9	(2.1-5.7)	Tioga	13	8	6.7	(2.1-11.3)	5	3.6	(0.4-6.8)
Forest	7	5	26.4	(3.3-49.5)	2	8.2	(0.0-19.6)	Union	17	10	9.1	(3.5-14.7)	7	6.4	(1.7-11.1)
Franklin	80	54	15.5	(11.4-19.6)	26	5.8	(3.6-8.0)	Venango	31	29	18.2	(11.6-24.8)	2	1.3	(0.0-3.1)
Fulton	3	2	5.8	(0.0-13.8)	1	2.3	(0.0-6.8)	Warren	16	12	9.2	(4.0-14.4)	4	2.7	(0.1-5.3)
Greene	22	16	14.3	(7.3-21.3)	6	4.7	(0.9-8.5)	Washington	135	91	15.6	(12.4-18.8)	44	6.5	(4.6-8.4)
Huntingdon	25	18	14.6	(7.9-21.3)	7	4.5	(1.2-7.8)	Wayne	36	26	17.5	(10.8-24.2)	10	6.2	(2.4-10.0)
Indiana	46	29	12.9	(8.2-17.6)	17	6.2	(3.3-9.1)	Westmoreland	203	137	13.0	(10.8-15.2)	66	4.9	(3.7-6.1)
Jefferson	15	12	9.6	(4.2-15.0)	3	2.5	(0.0-5.3)	Wyoming	13	9	13.9	(4.8-23.0)	4	5.3	(0.1-10.5)
								York	194	133	13.2	(11.0-15.4)	61	5.3	(4.0-6.6)

NOTES: Age-adjusted rates are per 100,000 and are computed by the direct method using the 2000 U.S. standard million population. Rates based on less than 20 events are considered statistically unreliable. CI = 95% confidence interval based on a formula for estimating the standard error or SE (see Technical Notes). Starting in 2001, cancer cases were coded using ICD-O-3. Cancer primary site/type groupings follow the definitions used by the National Cancer Institute's SEER program.

Cancer of the Buccal Cavity and Pharynx: MORTALITY

TABLE 2-G
Number of Cancer Deaths, Average Annual Age-Adjusted Death Rates and 95% Confidence Intervals
by County and Sex, Pennsylvania Residents, 2000-2004

County	Total Deaths	Males			Females			County	Total Deaths	Males			Females		
		No.	Rate	(CI)	No.	Rate	(CI)			No.	Rate	(CI)	No.	Rate	(CI)
All Counties	1,722	1,173	3.8	(3.6-4.0)	549	1.3	(1.2-1.4)								
Adams	9	5	2.0	(0.2-3.8)	4	1.5	(0.0-3.0)	Juniata	2	1	1.7	(0.0-5.0)	1	1.3	(0.0-3.8)
Allegheny	193	121	3.6	(3.0-4.2)	72	1.4	(1.1-1.7)	Lackawanna	33	26	4.5	(2.8-6.2)	7	0.7	(0.2-1.2)
Armstrong	15	13	6.3	(2.9-9.7)	2	0.9	(0.0-2.1)	Lancaster	45	31	2.8	(1.8-3.8)	14	0.9	(0.4-1.4)
Beaver	45	38	7.3	(5.0-9.6)	7	1.0	(0.3-1.7)	Lawrence	18	12	4.4	(1.9-6.9)	6	1.6	(0.3-2.9)
Bedford	8	6	4.0	(0.8-7.2)	2	1.2	(0.0-2.9)	Lebanon	13	8	2.5	(0.8-4.2)	5	1.1	(0.1-2.1)
Berks	51	36	3.8	(2.6-5.0)	15	1.2	(0.6-1.8)	Lehigh	44	29	3.7	(2.4-5.0)	15	1.4	(0.7-2.1)
Blair	22	14	4.3	(2.0-6.6)	8	1.5	(0.5-2.5)	Luzerne	56	45	5.0	(3.5-6.5)	11	0.8	(0.3-1.3)
Bradford	12	9	5.6	(1.9-9.3)	3	1.3	(0.0-2.8)	Lycoming	13	9	3.0	(1.0-5.0)	4	1.0	(0.0-2.0)
Bucks	70	44	3.0	(2.1-3.9)	26	1.5	(0.9-2.1)	McKean	4	3	2.4	(0.0-5.1)	1	0.9	(0.0-2.7)
Butler	18	11	2.5	(1.0-4.0)	7	1.3	(0.3-2.3)	Mercer	17	13	4.0	(1.8-6.2)	4	1.2	(0.0-2.4)
Cambria	29	21	5.1	(2.9-7.3)	8	1.3	(0.4-2.2)	Mifflin	5	2	1.4	(0.0-3.3)	3	1.4	(0.0-3.0)
Cameron	1	0	-		1	2.8	(0.0-8.3)	Monroe	13	9	3.3	(1.1-5.5)	4	1.0	(0.0-2.0)
Carbon	15	12	7.0	(3.0-11.0)	3	1.3	(0.0-2.8)	Montgomery	100	66	3.6	(2.7-4.5)	34	1.3	(0.9-1.7)
Centre	9	6	2.1	(0.4-3.8)	3	0.9	(0.0-1.9)	Montour	1	1	2.1	(0.0-6.2)	0	-	
Chester	46	31	3.3	(2.1-4.5)	15	1.2	(0.6-1.8)	Northampton	41	32	4.7	(3.1-6.3)	9	1.1	(0.4-1.8)
Clarion	4	1	0.9	(0.0-2.7)	3	1.8	(0.0-3.8)	Northumberland	12	7	2.5	(0.6-4.4)	5	1.3	(0.2-2.4)
Clearfield	5	4	1.6	(0.0-3.2)	1	0.2	(0.0-0.6)	Perry	8	4	4.2	(0.1-8.3)	4	3.4	(0.1-6.7)
Clinton	7	5	5.1	(0.6-9.6)	2	1.2	(0.0-2.9)	Philadelphia	254	177	5.7	(4.9-6.5)	77	1.7	(1.3-2.1)
Columbia	6	3	1.9	(0.0-4.1)	3	1.3	(0.0-2.8)	Pike	4	2	1.4	(0.0-3.3)	2	1.4	(0.0-3.3)
Crawford	16	10	4.0	(1.5-6.5)	6	1.9	(0.4-3.4)	Potter	1	0	-		1	1.6	(0.0-4.7)
Cumberland	23	14	2.7	(1.3-4.1)	9	1.2	(0.4-2.0)	Schuylkill	27	20	4.7	(2.6-6.8)	7	1.3	(0.3-2.3)
Dauphin	27	16	2.5	(1.3-3.7)	11	1.3	(0.5-2.1)	Snyder	6	4	4.0	(0.1-7.9)	2	1.7	(0.0-4.1)
Delaware	76	52	3.9	(2.8-5.0)	24	1.3	(0.8-1.8)	Somerset	11	6	2.5	(0.5-4.5)	5	2.0	(0.2-3.8)
Elk	6	5	5.0	(0.6-9.4)	1	0.6	(0.0-1.8)	Sullivan	1	1	3.7	(0.0-11.0)	0	-	
Erie	42	22	3.2	(1.9-4.5)	20	2.0	(1.1-2.9)	Susquehanna	4	3	2.5	(0.0-5.3)	1	0.5	(0.0-1.5)
Fayette	23	18	4.4	(2.4-6.4)	5	0.7	(0.1-1.3)	Tioga	4	3	2.4	(0.0-5.1)	1	0.9	(0.0-2.7)
Forest	0	0	-		0	-		Union	6	5	4.4	(0.5-8.3)	1	0.5	(0.0-1.5)
Franklin	20	13	3.8	(1.7-5.9)	7	1.4	(0.4-2.4)	Venango	12	9	6.5	(2.3-10.7)	3	1.7	(0.0-3.6)
Fulton	2	1	2.6	(0.0-7.7)	1	2.1	(0.0-6.2)	Warren	4	3	2.3	(0.0-4.9)	1	0.7	(0.0-2.1)
Greene	5	4	4.2	(0.1-8.3)	1	0.9	(0.0-2.7)	Washington	33	26	4.4	(2.7-6.1)	7	0.9	(0.2-1.6)
Huntingdon	3	1	0.7	(0.0-2.1)	2	1.2	(0.0-2.9)	Wayne	7	6	4.0	(0.8-7.2)	1	0.6	(0.0-1.8)
Indiana	9	4	1.7	(0.0-3.4)	5	1.7	(0.2-3.2)	Westmoreland	46	32	3.1	(2.0-4.2)	14	1.0	(0.5-1.5)
Jefferson	4	3	2.5	(0.0-5.3)	1	0.6	(0.0-1.8)	Wyoming	3	1	1.8	(0.0-5.3)	2	2.4	(0.0-5.7)
								York	53	34	3.7	(2.5-4.9)	19	1.6	(0.9-2.3)

NOTES: Age-adjusted rates are per 100,000 and are computed by the direct method using the 2000 U.S. standard million population. Rates based on less than 20 events are considered statistically unreliable. CI = 95% confidence interval based on a formula for estimating the standard error or SE (see Technical Notes) Cancer primary site/type groupings follow the primary site definitions used by the National Cancer Institute's SEER program